

## Conditions of the Club

Visitors and non-members are welcome.

Regular walkers will be required to join the club.

Annual subscription £5.00. School children free.

Car drivers and passengers are expected to share travelling costs.

NB. Drivers accepting payment should check that this is allowed under the terms of their motor insurance policy.

The leader of the walk will carry the first aid kit

Dogs are not allowed on the club walks.

All walkers are responsible for their own safety and accept that they take part in walks at their own risk.

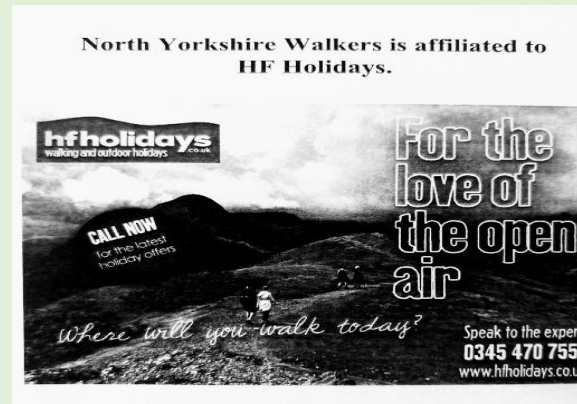
They should however:

- \* Follow the walk leader's instructions.
- \* Observe the Countryside Code.
- \* Wear suitable footwear and clothing.
- \* Carry spare clothing, food & safety equipment appropriate for the walk.

It will be the walk leader's responsibility to contact you should the walk need to be cancelled for whatever reason – hence, **it is essential that you inform the walk leader of your intention to attend and to provide them with your contact number.** If there is no telephone number given for the walk leader, please contact Ken or Christine - see contact details below.

**Club Secretary:** Christine Clarke 07484 635390

**Walks Secretary:** Ken Haxton: 07762784525



## Walk classification

**Easy:** Flat or undulating terrain, a few stiles

**Moderate:** Ascents/descents, short & steep or long & gradual, uneven terrain and likely to include stiles.

**Difficult:** Likely to include challenging ascents & descents, uneven terrain and stiles.  
**Strenuous.**

## NORTH YORKSHIRE WALKERS

[www.northyorkshirewalkers.co.uk](http://www.northyorkshirewalkers.co.uk)

## Walking Programme July and August 2023



### Sunday 2<sup>nd</sup> July 2023 Moderate 8.8 mls

Leader: Claire Hill

**Start: 10.00**

From East Witton to Coverbridge, Middleham & Coverham Includes some ascents & descents with the option to cut out one climb. Some road walking but also fields & tracks.

Parking. East Witton. Car share if possible.  
**What 3 words: butterfly.viewing.struggle**

### Sunday 9<sup>th</sup> July 2023 Easy 7 miles

Leader: Sue Flanigan

**Start:10.00**

From Aldwark, flat walk on field farm & woodland tracks. Quiet roads. 3 styles.

Parking near Aldwark Arms.  
**What 3 words: pheasants.chair.lends**

### Sunday 16<sup>th</sup> July 2023 Moderate 9 miles

Leader: Barbara Dickson

**Start:10.00**

From Leyburn across fields to Wensley via lots of styles! Then past Bolton Hall towards Redmire and return via Preston under Scar and the Shawl. 860ft of climb.

Parking Leyburn Market place.

**What 3 words: consumed.fuse.odds**

### Sunday 23<sup>rd</sup> July 2023 Easy 7.5 miles

Leader: Jess

**Start:10.00**

Canal, field paths, some quiet road walking & 1 style

Parking. Canal car park on Boroughbridge road Ripon.

**What 3 words: corrupted.noodle.attracts**

### Sunday 30<sup>th</sup> July 2023 Moderate 7/8 miles

Leader: Derek Hutchinson

**Start:10.00**

From Westerdale. Field paths open moorland & small amount of quiet roads. Castleton Rigg & Westerdale Moor.

Parking at village hall.  
**What 3 words: expiring.written.sued**  
**Grid ref NZ 664058**

### Sunday 6<sup>th</sup> August 2023 Moderate 6miles

Leader: Sue Flanigan

**Start:10.00**

Kilburn & Olstead.

Along to Roulston Scar, down and on to Kilburn & Olstead back via Scotch corner.  
Field woodland & tracks. One moderate ascent & descent.

Parking along from the Glider Club.  
**What 3 words: monday.watching.relief**

### Sunday 13<sup>th</sup> August 2023 Moderate 8 miles

Leader: Dereck Hutchinson

**Start:10.00**

Burnt Yates.

Field paths & farm tracks. Part of the Nidderdale way.

Parking. village hall car park  
**What 3 words: panic.sensitive.swordfish**  
**Grid ref SE 252612**

### Sunday 20<sup>th</sup> August 2023 Moderate 7.5 mls

Leader: Sue Flanigan

**Start:10.00**

From Kirby Malzeard on farm tracks to Azerley, Galphay & Brathwaite Hall.

Park on the main street in Kirby Malzeard.  
**What 3 words: paradise.yelled.zinc**

### Sunday 27<sup>th</sup> August 2023 Moderate 7 miles

Leader: Derek Hutchinson

**Start:10.00**

From Buckden. Mostly good grass paths on limestone. Cray, Yockenthwaite, Hubberholme.

Park Buckden village car park (pay)  
**What 3 words: tripling.photo.monorail**  
**Grid ref SO 942773**